



How to type in NEW data

- 1- Clear project
- 2- Go to Part Setup
- 3- Enter values in row 1, 16, 27

Part Number
Diameter
Radius

VTube-LASER

Load Project Activate BPC Save Project Save As... Project Clear Project

View Mode: SELECT, Proje

File Help

Displayed in UI:

Part Setup

Main Notes List

	Variable Name	Value	
1	Part Number		
2	Part Name		
3	Comment 1		
4	Comment 2		
5	Customer		
6	Supplier		
7	Revision		
8	Material Spec		
9	Author		
10	Organization		
11	Bender Type		
12	Job Number		
13	Work Order		
14	Date/Time	5/7/2020 9:38:39 AM	
15	Diameter Profile Setup	Cylinder	
16	Diameter	3.000	inches
17	A-End Diameter	0.000	inches
18	B-End Diameter	0.000	inches
19	Wall	0.000	inches
20	Rec Width 1	0.000	inches
21	Rec Width 2	0.000	inches
22	Rec Wall	0.000	inches
23	Rec Fillet Radius	0.000	inches
24	Rec Angle	0.00	inches
25	Cut Length	0.000	inches
26	Automatic Calc Cut Length Type	Disabled	
27	Radius 1	0.000	inches
28	Radius 2	0.000	inches

Rev Master

Part Setup

Master Tube

Measure Setup

Measure Process

Measured Tube

Inspection Data

Bender Setup

Reports

Space Objects

Data Handling

User Interface

Active:1

DCP Auto = 3.000

Measuring Device: FARO Arm P

Location: 0.000, 0.000, 0.000

Under the Master Tube tab select:

- 1- Points
- 2- Enter the number of grid lines necessary
- 3- Hit Set
- 4- Enter XYZ or LRA data (if entering LRA enter it as L, A, R)
- 5- Enter all of X then Y then Z using the ENTER key on the keyboard

VTube-LASER

Load Project Activate BPC Save Project Save Project

File Help

Displayed in UI: TEST

Master Tube Data

Points Export Radius Translate Reverse

Point Count 4 Set Clear All

Master Centerline XYZ Data

☐ Lock Grids

Intersections Tangents

Pnt	X	Y	Z	Radius	DofBend
1	0.000	0.000	0.000		
2	11.000	0.000	0.000	2.000	0.67
3	11.000	12.000	0.000	2.000	0.67
4	22.000	12.000	0.000		

Current Cut Length: 0.000 in ☐ Auto Calc from XYZ Change

Incremental SB Compensated Absolute Shipyard 360C

Incremental LRA

	L	R	A	Radius	Rad Level
1	9.000	0.00	90.00	2.000	1
2	8.000	180.00	90.00	2.000	1
LL	9.000				

Rev Master

Part Setup

Master Tube

Measure Setup

Measure Process

Measured Tube

Inspection Data

Bender Setup

Reports

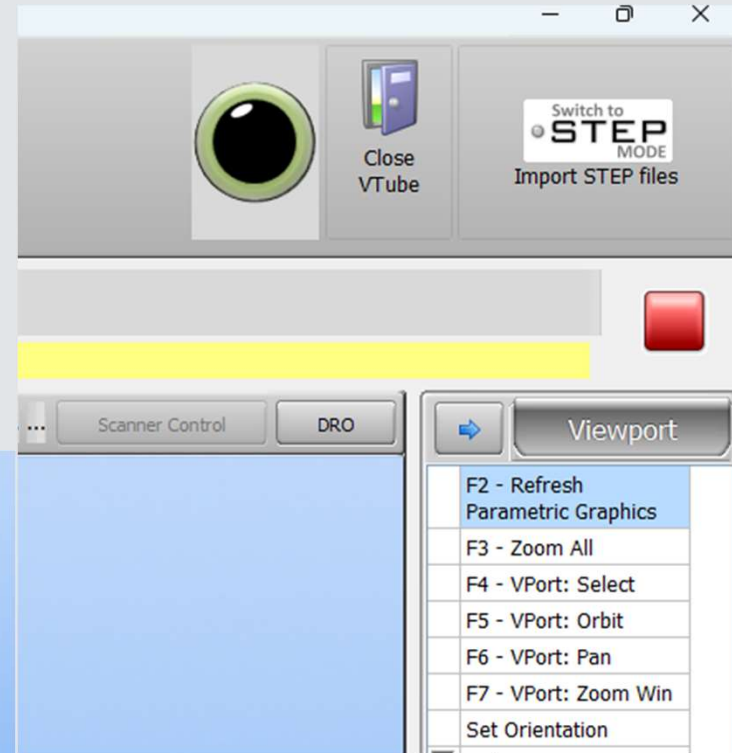
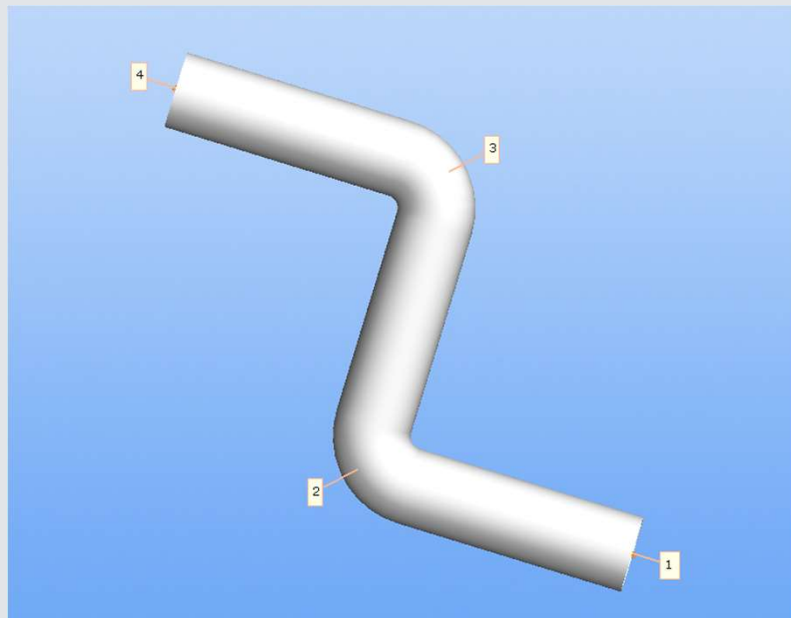
Space Objects

Data Handling

User Interface

Active:1

- 1- Press F2 to draw the tube
- 2- Press F3 to bring it into focus



Now you are ready to measure!

- 1- Go to Measure Process
- 2- Quick Start

