

VTube-LASER Quick Start

Guide for setting up the User Access Control (UAC)

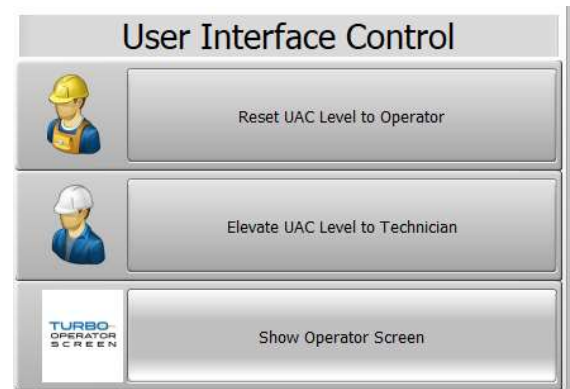


Setup for VTube-LASER User Access Control (UAC)

This guide shows how to turn on the USER ACCESS CONTROL (UAC). This control allows VTube use in TECHNICIAN mode or OPERATOR mode.

TECHNICIAN mode gives full capabilities to the user using it.

The OPERATOR mode password-protects the software and requires a password to change the options or inputted information.

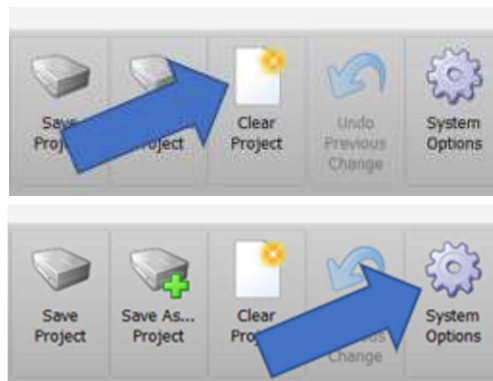


A user can enable UAC and various sections to protect and set the password to enter these sections. Then, when you exit SYSTEM OPTIONS, UAC will begin controlling access to the sections selected.

If a user has TECHNICIAN-level access, they will want to reset the UAC level to OPERATOR (the lowest level) when they finish working with VTube.

To do that, enter this menu and click the RESET UAC LEVEL TO OPERATOR button. If you do not click this button, VTube-LASER will stay in TECHNICIAN mode, and all operators will have full access.

1. CLEAR VTube



2. Go into SYSTEM OPTIONS

- Find the **UAC** tab
- Check box 1 to enable the UAC
- The password can be changed on the left side. The default password is **Advanced**
- Many **SECTION CONTROL** options can be turned on or off. Example: When changing the part setup inputs, when changing measured or master data, choose the sections to be password-controlled by checking the associated box.

UAC (User Access Control) Setup

UAC Level: Technician

Reset UAC level to OPERATOR

UAC Password Setup

Enter the password to use to elevate UAC to Technician

View Password

UAC Password Setup

Enter the password to use to elevate UAC to Technician

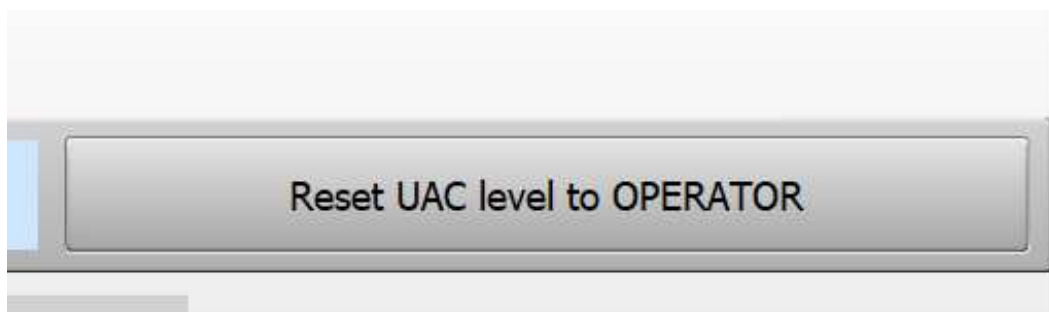
Advanced

View Password

UAC Controls

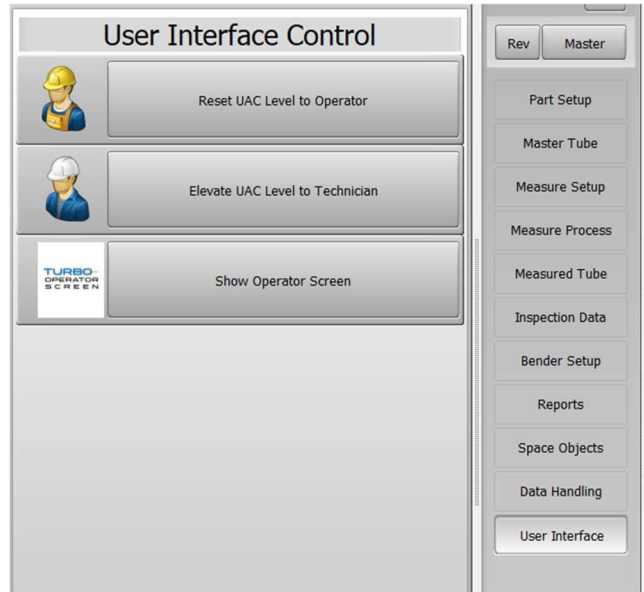
UAC Enabled	Operator Screen Enabled	Section Control: When Enter VTube-LASER Screen	Section Control: When Enter VTube-STEP Screen	Section Control: When Enter System Options Screen	Section Control: When Change Part Setup Values	Section Control: When Change Measure Setup Values	Section Control: When Change Master Tube Data Values	Section Control: When Change Measured Tube Data Values	Section Control: When Enter Tube Data Storage	Section Control: When Change Inspection Setup	Section Control: When Exit Operator Screen	Operator Screen Button Control: Show Report	Operator Screen Button Control: Bender Setup	Require User ID Entry Before Measure	Section Control: When Enter Space Objects Creation and Control	Operator Screen: Cylindrical Measure Process	Operator Screen: Rectangular Measure Process
<input checked="" type="checkbox"/>	<input type="checkbox"/>	<input checked="" type="checkbox"/>	<input checked="" type="checkbox"/>	<input checked="" type="checkbox"/>	<input checked="" type="checkbox"/>	<input checked="" type="checkbox"/>	<input checked="" type="checkbox"/>	<input checked="" type="checkbox"/>	<input checked="" type="checkbox"/>	<input checked="" type="checkbox"/>	<input checked="" type="checkbox"/>	<input checked="" type="checkbox"/>	<input checked="" type="checkbox"/>	<input type="checkbox"/>	<input checked="" type="checkbox"/>	UnScan	Corner Profile
		On/Off	On/Off	On/Off	On/Off	On/Off	On/Off	On/Off	On/Off	On/Off	On/Off	Button Visible	Button Visible	On/Off	On/Off	Process	Process

- After checking the selections, press **RESET UAC LEVEL TO OPERATOR**.



The access level will change to **OPERATOR** and require a password.

8. To switch between OPERATOR and TECHNICIAN, go to the USER INTERFACE tab and select the different options.



END OF THE UAC SETUP GUIDE