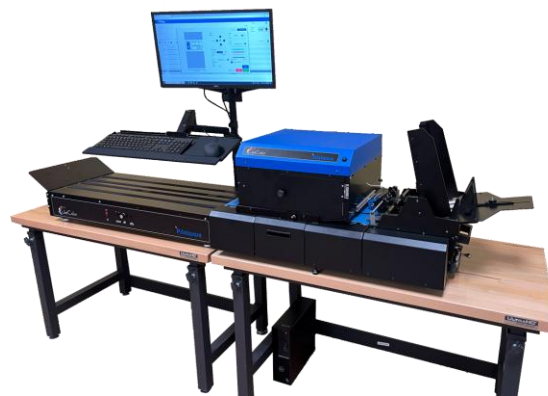


1175 Printhead Assembly Replacement

The HP print engine in the printhead assembly is very durable and typically will last a long time. However, at some point the nozzles or other components in the HP print engine will wear out from use and thus need to be replaced. The print engine itself is rated for roughly one million+ impressions at 10% coverage. To ensure a quick and painless replacement for the end user the entire printhead is replaced. After replacing the entire printhead assembly, the old assembly must be sent back to Printware for repair and refurbishment.



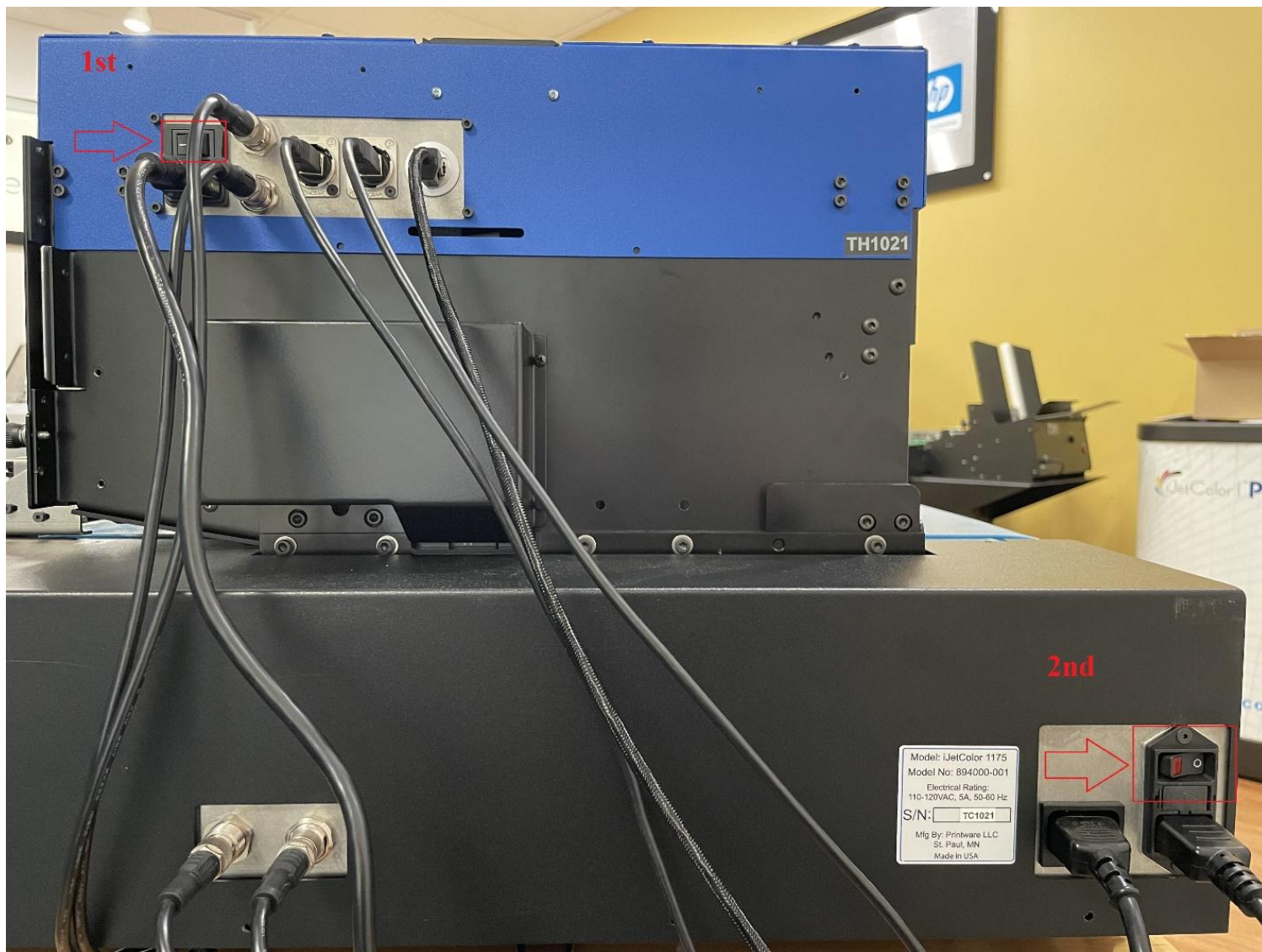
Note: The printhead is industrially constructed and weighs roughly 50 pounds. It will take two people capable of lifting the printhead to perform this task.

To replace the printhead:

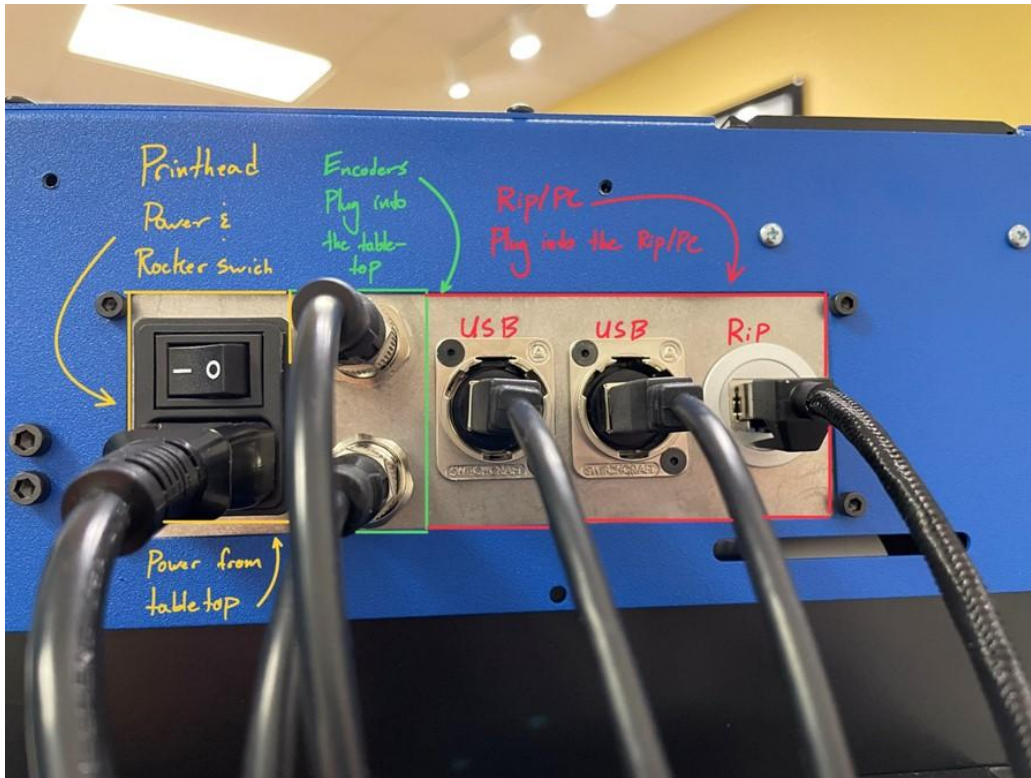
1. Ensure the service station is *installed* and capping the printhead. Note: Printheads must be shipped back with a service station installed. The new printhead will arrive with a brand-new service station installed.
2. Power off the printhead assembly using the power button on the operator side of the printhead.



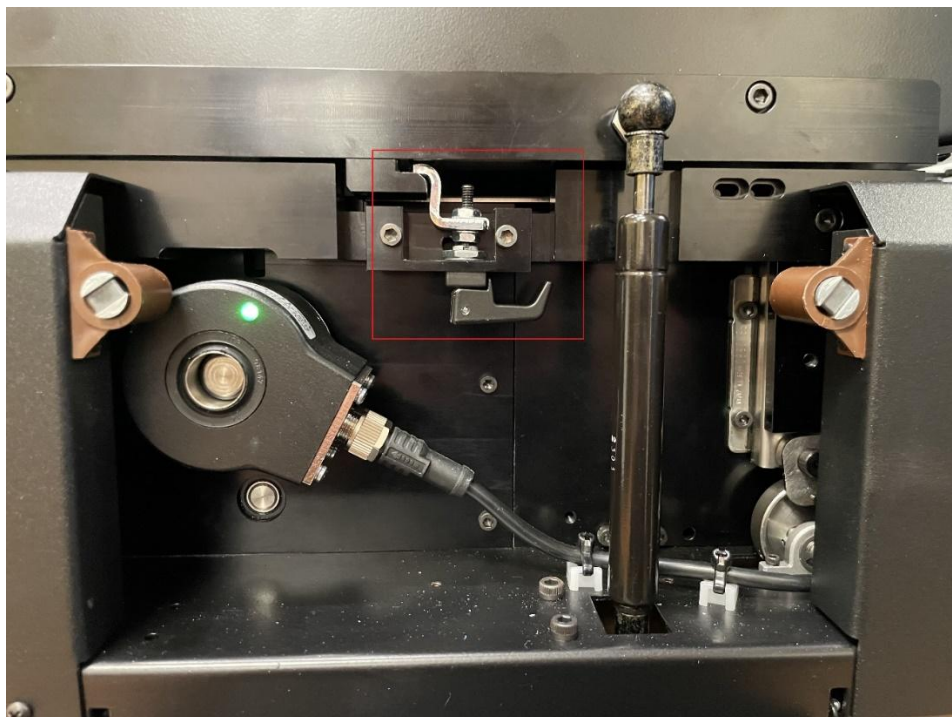
3. Once the front power light turns off, switch off the printhead power rocker switch on the back of the printhead. Lastly, turn off the main power for the tabletop in the bottom corner.



4. Disconnect all cables on the back of the printhead. Pay attention to where they are connected so that re-connection will be easier.



5. Open the printhead lift access door located on the front of the machine. Unlatch the printhead.



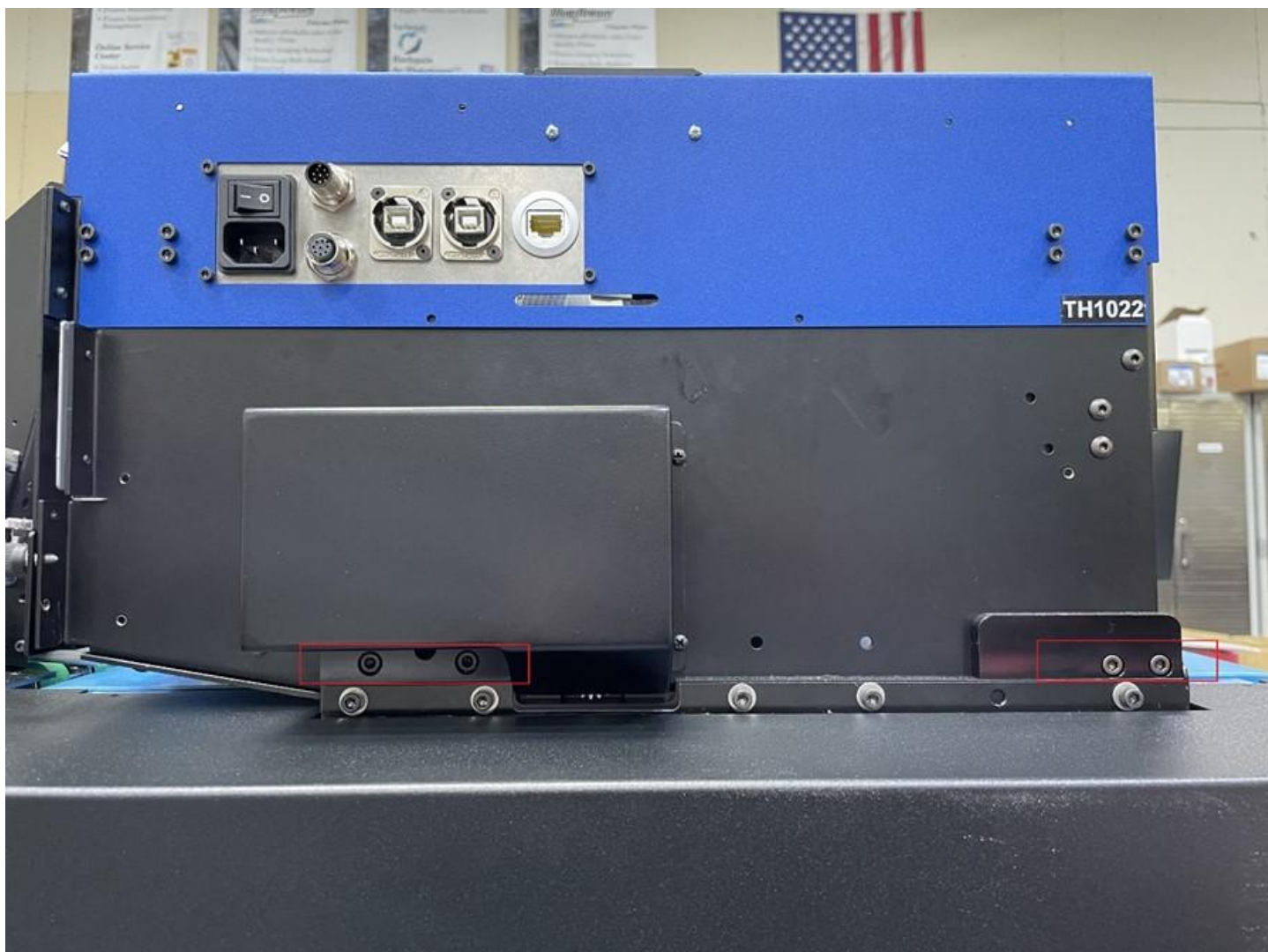
6. With the printhead raised up, remove the safety clip securing the gas lift to the printhead. Set the pin aside.



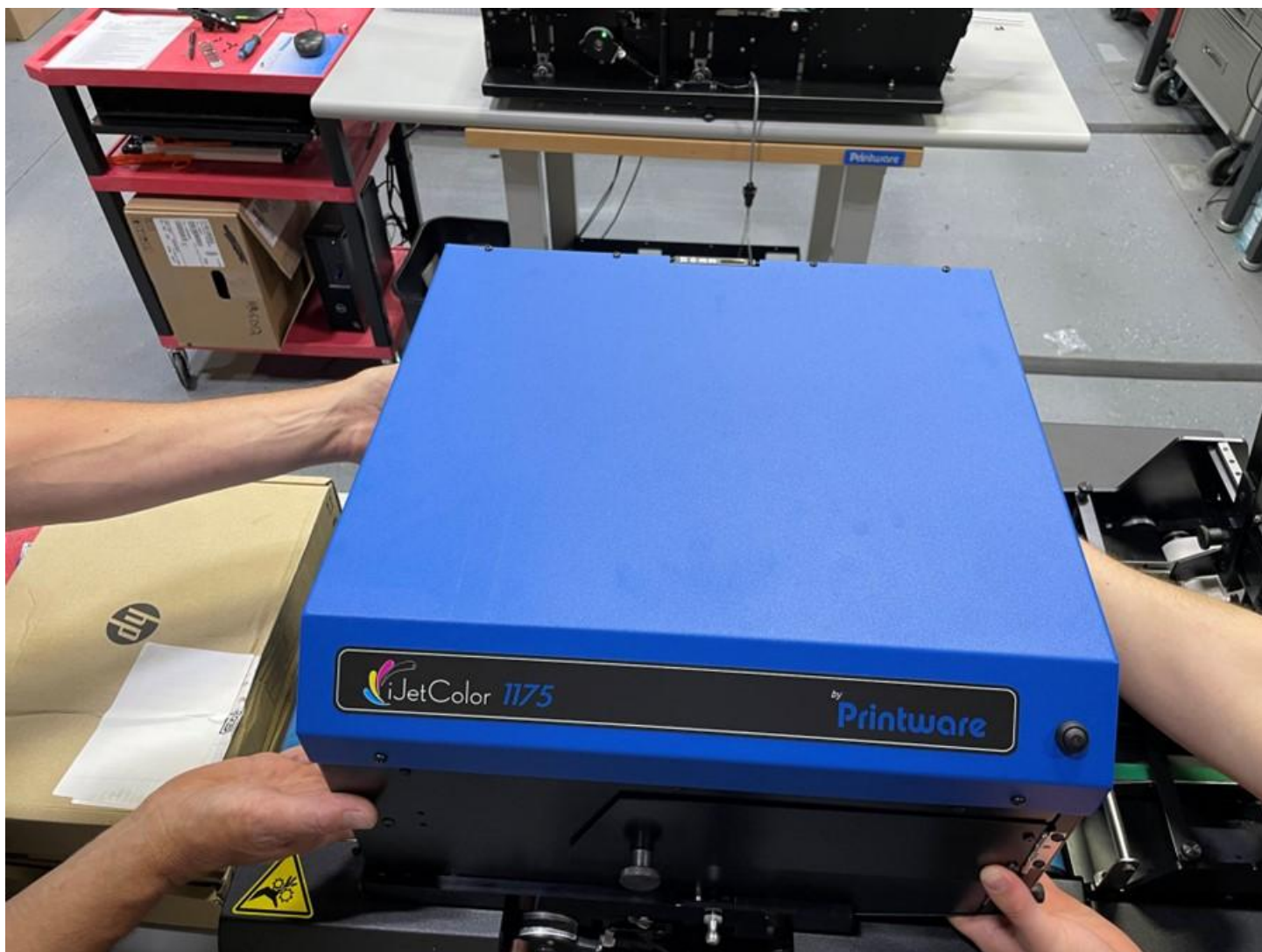
7. Holding the printhead from below to provide support, remove the gas lift. Drop the printhead head down slowly with the gas lift disconnected.



8. Remove the four screws that secure the printhead to the frame. There are two screws in either bracket. The screws can be removed with a 5/32nd hex key. Save the screws for use with the new printhead.

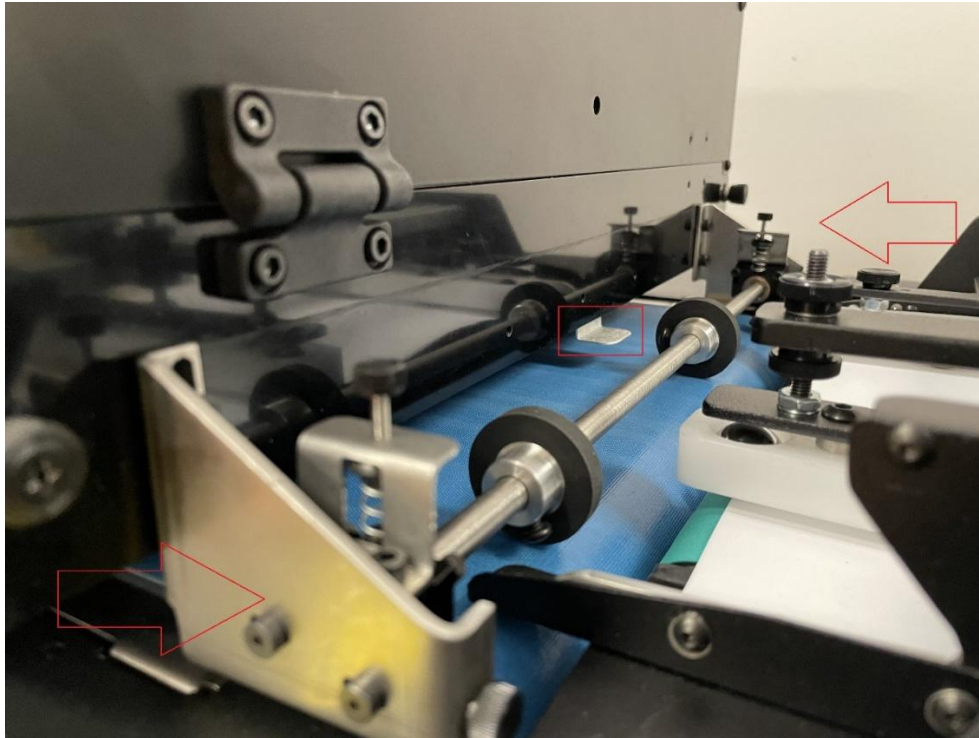


9. Being careful not to damage the infeed (TOF) sensor, lift the old printhead off the tabletop mounting frame and carefully set it on a table or cart. The printhead is industrially constructed and it weighs roughly 50 pounds. So, it will take *two people* capable of lifting the printhead to perform this task.

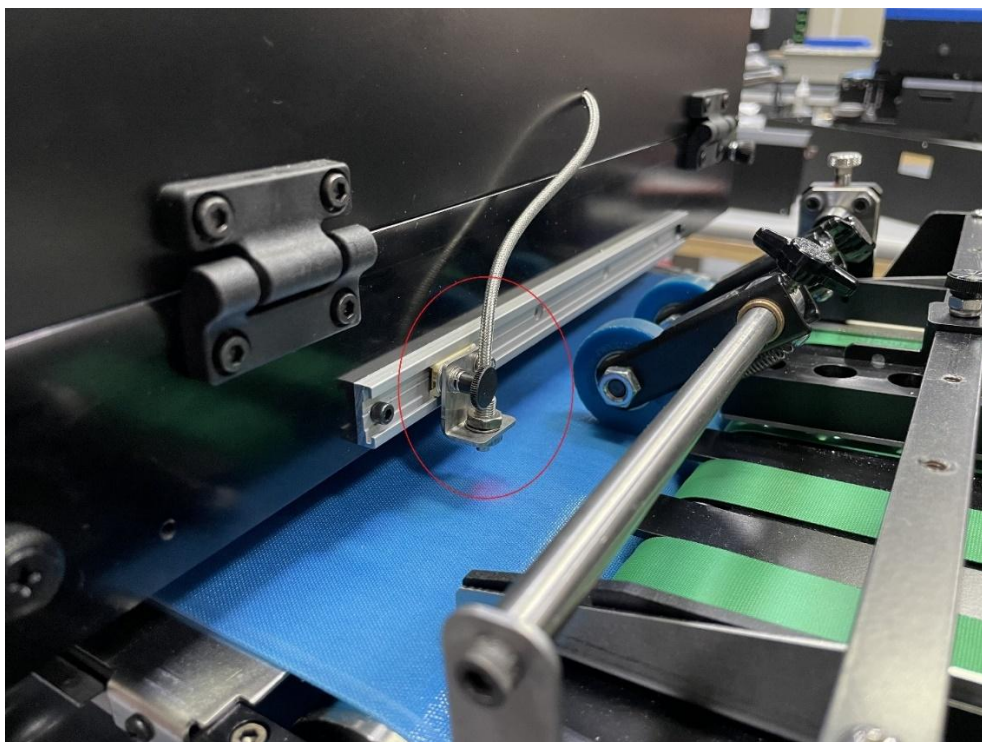


10. Unpack the new printhead.

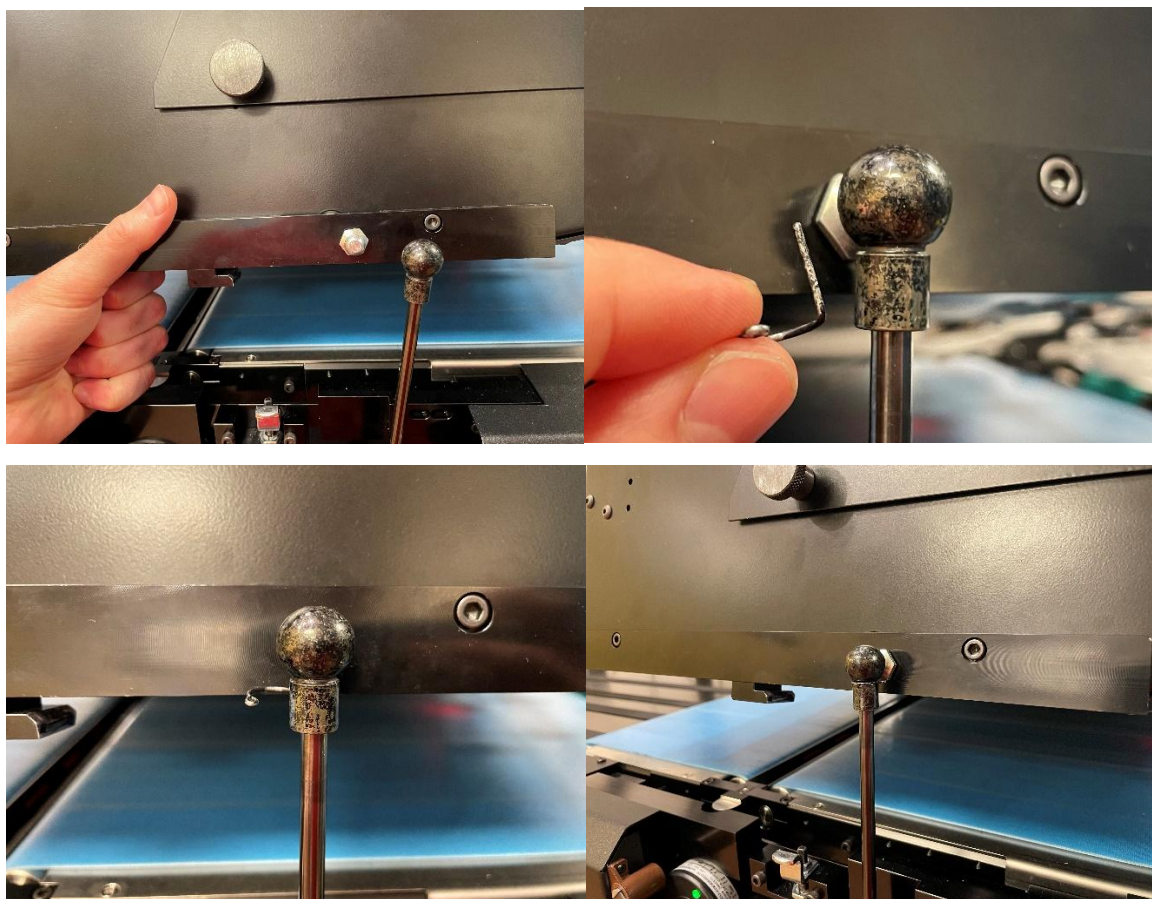
11. With two people, lift the new printhead onto the tabletop. Pay careful attention not to damage the infeed (TOF) sensor or media wheel assembly.



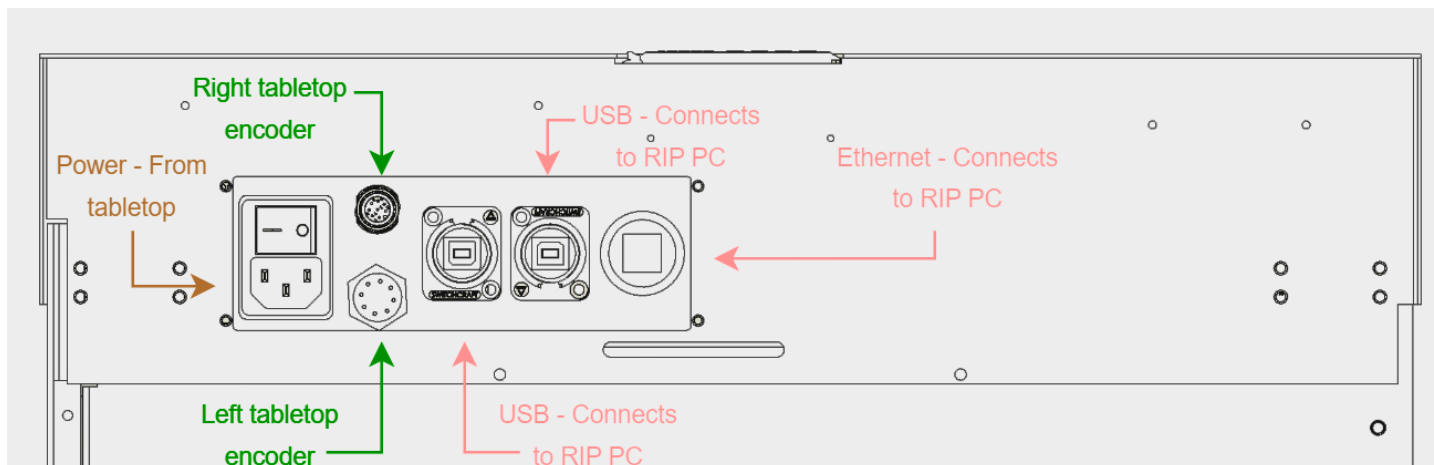
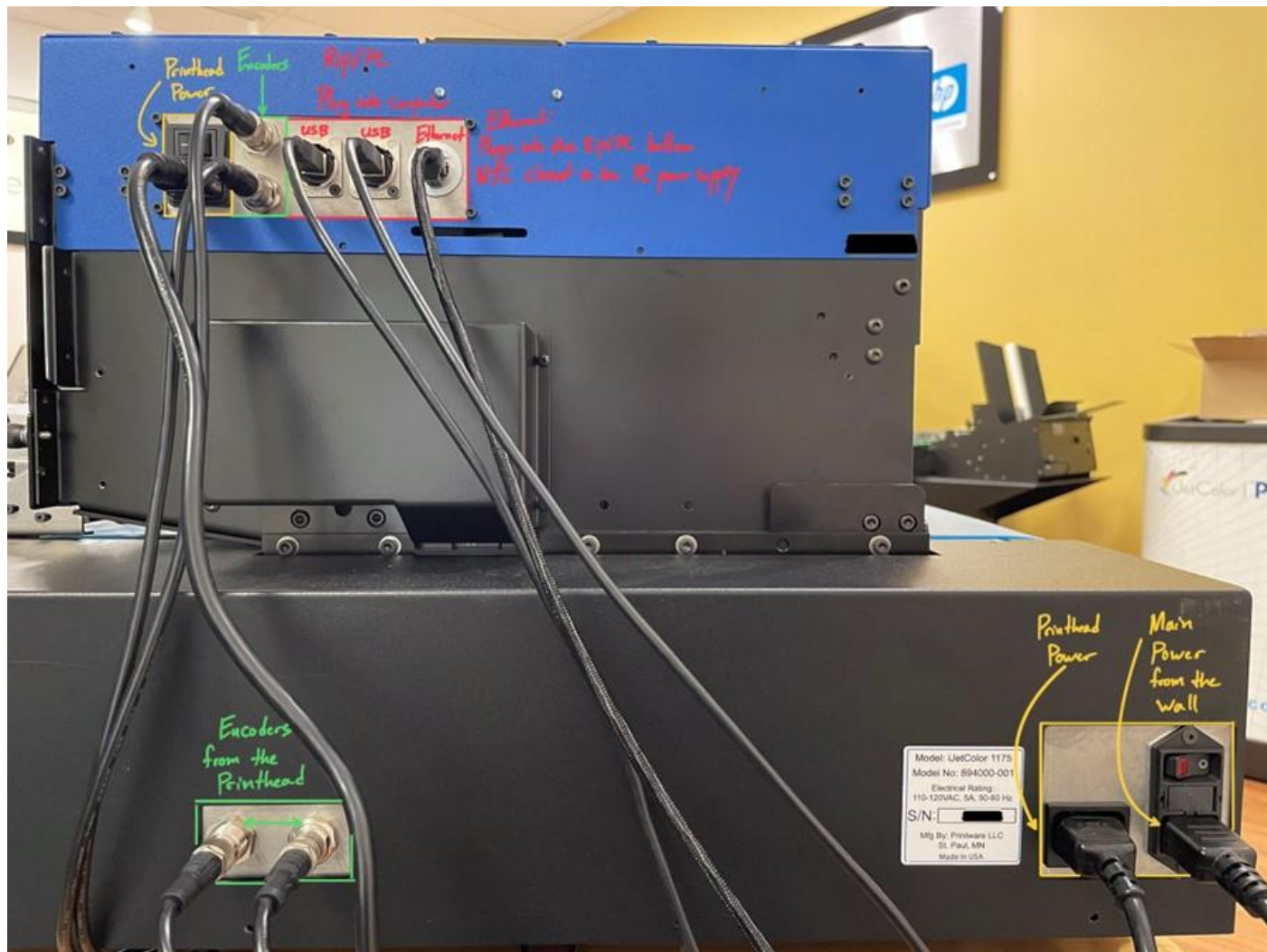
Note: On some models, the TOF sensor resides on an external sliding bracket. Be careful not to damage the sensor when installing the printhead.



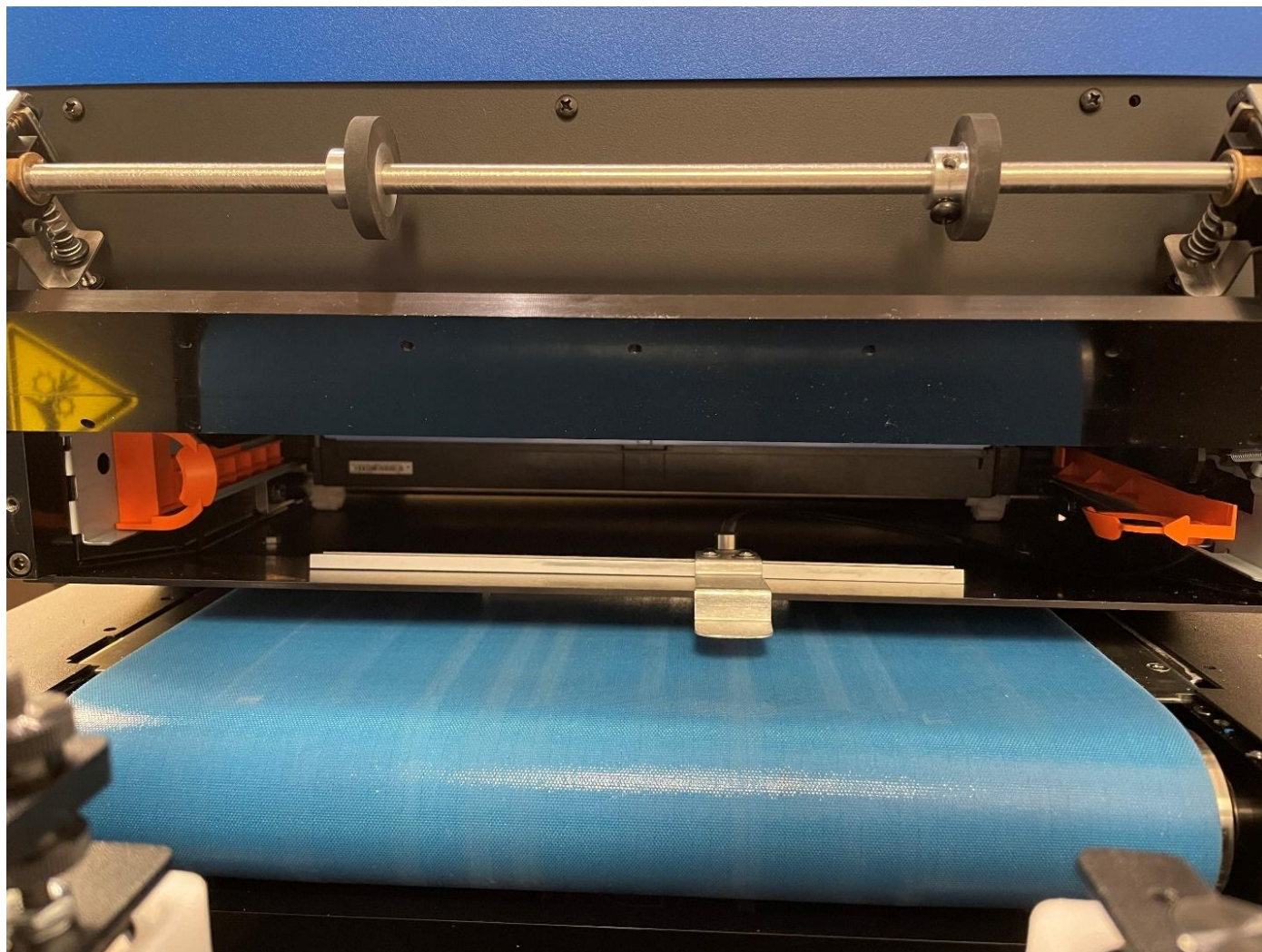
12. Install the four bracket screws removed from the old printhead. You may have to slightly re-position the printhead to make the holes line up.
13. Install printhead gas lift located on the front of the machine. Lift the printhead, install the gas lift onto the ball head. Secure with the safety pin (There are two holes on the left of the ball head connector). Lower the printhead back down and secure it into place with the printhead lift latch.



14. Connect all the cables to the back of the printhead.



- 15.** Loosen the thumbscrews securing the service station door and open the door. Remove the two orange shipping braces. The brace on the left pulls straight out. The brace on the right pulls left at a slight angle before disengaging. Close the service station door and tighten the thumbscrews.

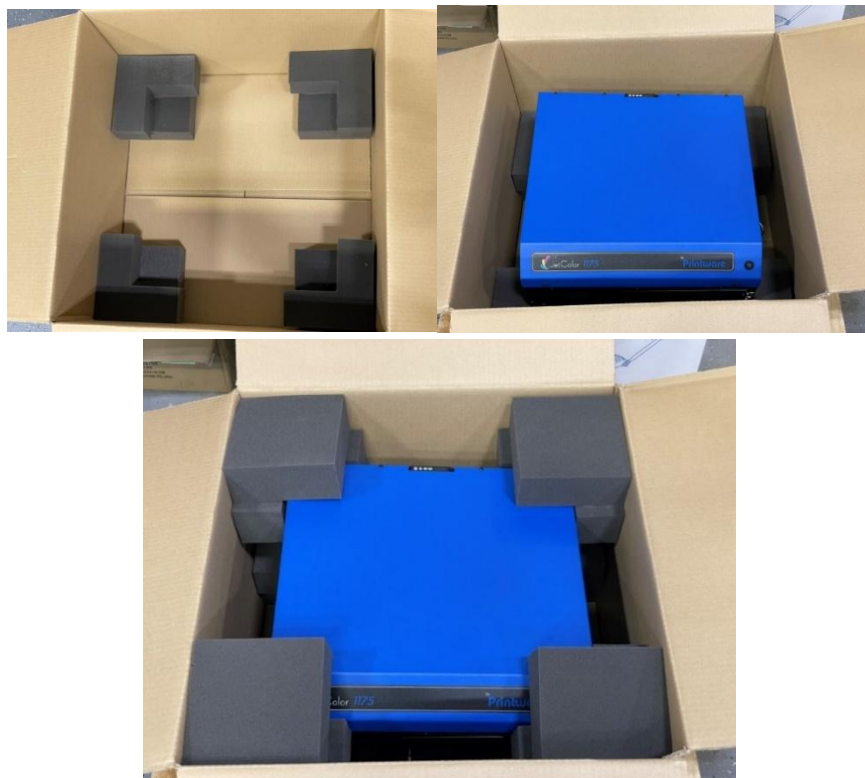


- 16.** Install both orange shipping braces in the *old* printhead and secure the door with the thumbscrew. Left brace installs straight in. The right brace slides in at a slight angle and snaps into place.

Note: Printheads must be shipped back with a service station installed.

- 17.** Power up the new printhead. Main tabletop power switch -> Printhead power switch -> Printhead front power button.

18. Package the old printhead on a pallet for shipment back to Printware.



19. Email Printware Support (support@ijetcolor.com) for a bill of lading. You can also schedule your own pickup to send the printhead back to Printware.

Address: Printware

2935 Waters Rd, Suite 200

St Paul, MN 55121

20. From here, please call technical support at 651-456-1400 EXT 2 to complete the installation.

Thank you for your continued support and happy printing.

-Printware