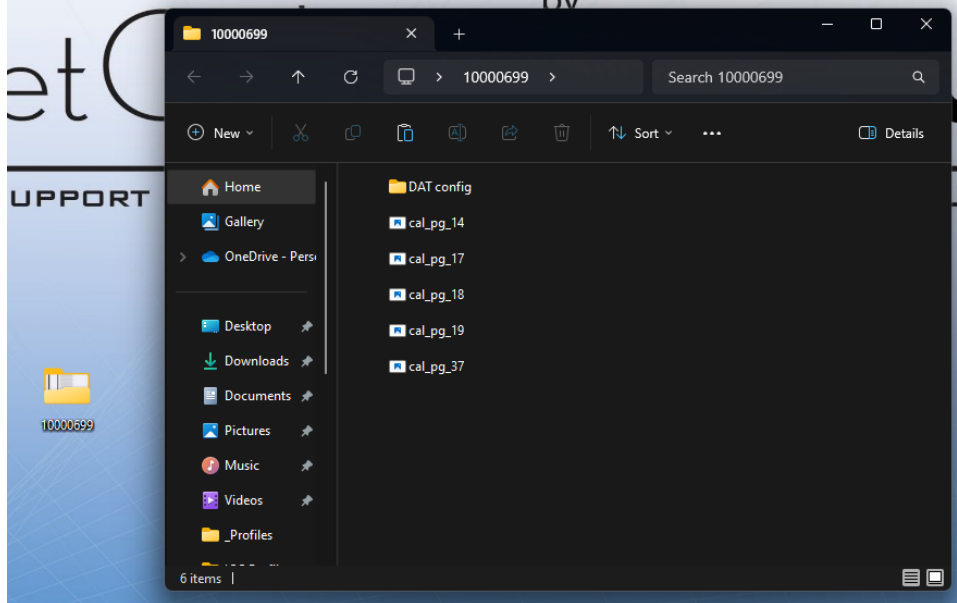




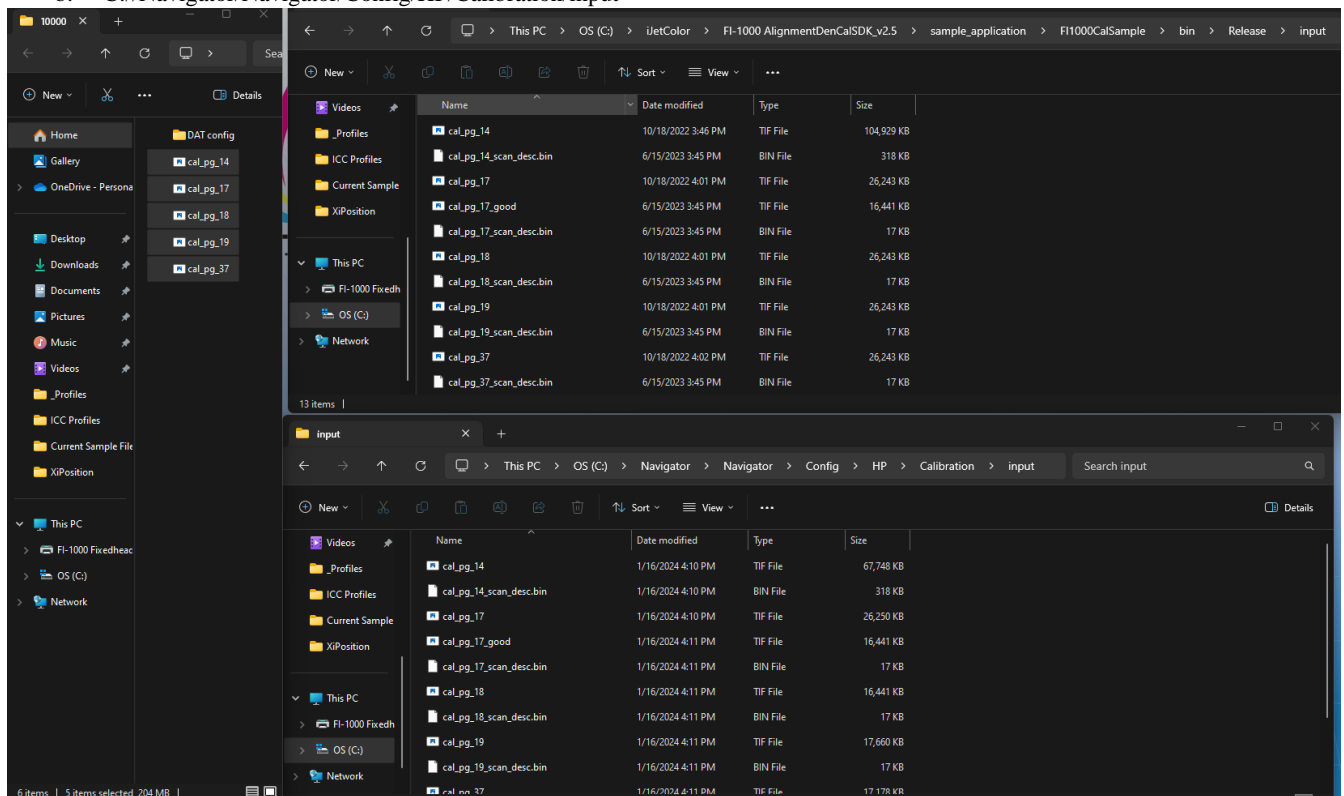
# Printware

## Calibration File Setup

1. Place Calibration File folder on Desktop. It should look like the image below:



2. Copy each cal\_pg\_xx file into the two locations pictured:
  - a. C://iJetColor/FI-1000 AlignmentDenCalSDK\_v2.5/sample\_application/FI1000CalSample/bin/Release/input
  - b. C://Navigator/Navigator/Config/HP/Calibration/input





# Printware

3. Open the DAT config folder and copy each file inside. This can be quickly done with Ctrl+A then Ctrl+C. You'll paste the files into the location pictured:
  - a. C://iJetColor/Die Adjustment Tool

