



TRANSFORMATIVE INTELLIGENCE FOR THE FOOD SUPPLY CHAIN



A unified supply-chain platform that seamlessly connects the Lineage network, driving collaboration, performance and efficiency for all supply chain participants.

Lineage Link is a fully integrated platform that provides unprecedented visibility to customers, transforming supply chain interactions through access to real-time intelligence. By partnering with Lineage, you can monitor, move, manage and collaborate across your cold chain unlike ever before.

Lineage Link enables our customers to easily view inventory and track order progress, while the modern and easy-to-access platform provides consistency across our cold storage network. Using a single visibility, collaboration and execution platform, we can seamlessly engage, collaborate and take the right actions that lead to optimal customer service performance.

Visibility With Control.

Inventory Visibility and Execution:

View stock on hand by lot, pallet and item ID, any day, any time. Link to active orders against available lots and view associated line detail. Place and release holds by lot/pallet.

Order Visibility:

Watch inbound or outbound orders progress from Open to Plan to Ship and complete. Verify order line item detail quantity with allocated lot IDs.

Shipment Visibility and Collaboration:

Keep pace with facility processing events, including driver arrival and active load/unloading of orders. Share single-use visibility links with customers so they can track order progress at Pick Up.

Actionable Insights.



Exceptions and Tasking:

Set notifications on order progress or inventory exceptions using standard workbench rules configurable for your needs.



Reporting:

Access shipment paperwork for orders, including Bills of Lading (BOL), after they are ship-transacted by each facility.



Customer Inquiry:

Seamlessly connect with our customer support team regarding an order, a shipment or inventory balance within Lineage Link.

Lineage Link enables proactive and informed decision-making, inventory control and smarter supply chain execution.



VIEW DATA IN REAL TIME

View data as it is updated in Lineage warehouse management systems.



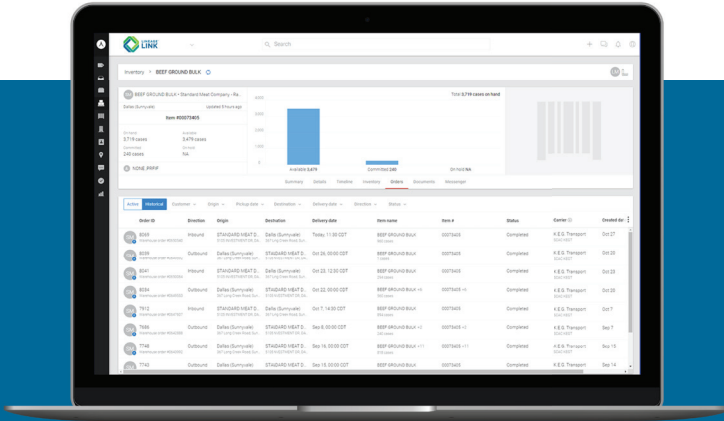
MANAGE USER ACCESS

Manage users for your secure customer dedicated tenant. Grant access to your teammates anytime.



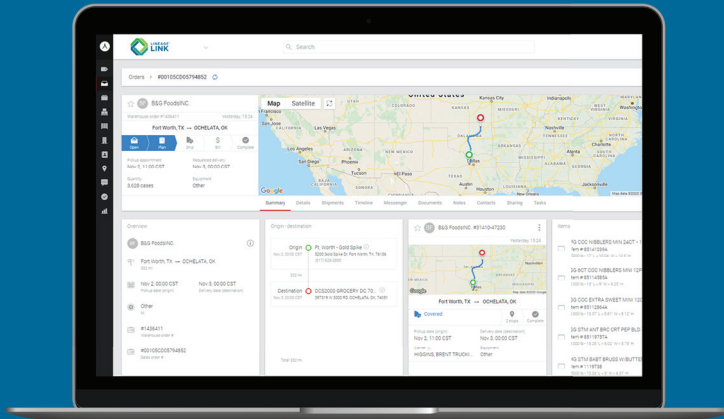
HARNESS NETWORK-WIDE COVERAGE

Cross-network access to inventory, order and shipment data. Network coverage is continuously expanding.



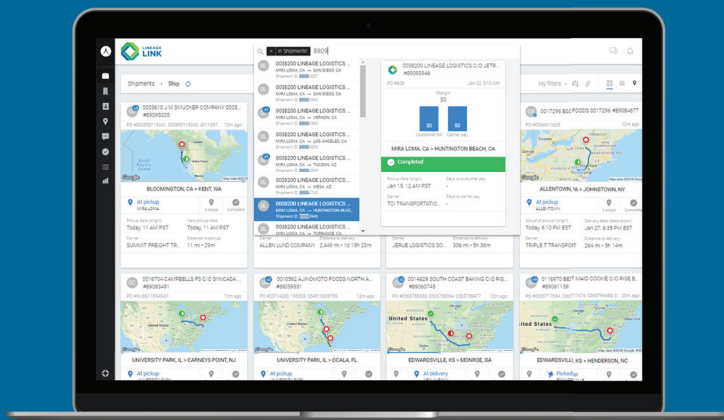
INVENTORY

- Filter by Item, facility and balance type
- Access complete Lot History
- Drill to detail by Lot/Pallet with hold Codes
- Link to Active and Historical orders



ORDERS

- Filter/Sort by date, direction, facility
- #Tag priority orders for later search
- Validate order line quantity detail with allocated lots
- Track progress from Open to Plan-Ship-Complete



SHIPMENTS

- Filter scheduled outbounds by carrier, destination and date
- #Tag and track active route status
- Share single-use shipment links to anyone
- Track At-Pickup driver events (arrive, load scan, sign out)



INVENTORY CONTROL:

- **Monitor** item balances across facilities
- **Reconcile** Lot History — receipt to deplete
- **Manage** quality with 24x7 holds control



ORDER PROCESSING:

- **Receive** update on order progress
- **Access** to orders without Appointments
- **Act** to resolve order issues as they occur



LOGISTICS MANAGEMENT:

- **Measure** carrier on-time arrival and pickup
- **Manage** order ship/delivery dates by destination
- **Evaluate** turn time trends at each facility



Access Lineage Link from any desktop or mobile device using Google Chrome. For easier viewing of data on the go, companion applications are available on most mobile devices.



Lineage Team Members are here to support customer adoption of Lineage Link with online knowledge resources, video tutorials and coaching, train-the-trainer and more.